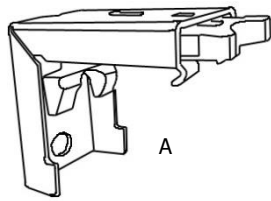


Installation Information

Roman Blind – Cordlock

Parts Included



Brackets



Screws



Cord Cleat/
Safety Device
Qty: 1



Safety
Screws
Qty: 2

Note: Please be aware that the mounting bracket quantity supplied will depend on the width of the blind. Please ensure that all brackets supplied are installed.

Important Notes

- Please check that all parts have been supplied before you begin to assemble your new Custom Roman Blind
- Do not raise/lower the blind until it is fully installed
- The finished blind width is the length of the headrail
- Ensure that the blind is mounted level for correct operation

Positioning Blind

As per your order, determine the correct fitting location of mounting brackets and mark where you are going to install the brackets.

- i) Inside the window frame (Inside Mount) or;
- ii) On the window frame or wall (Outside Mount)

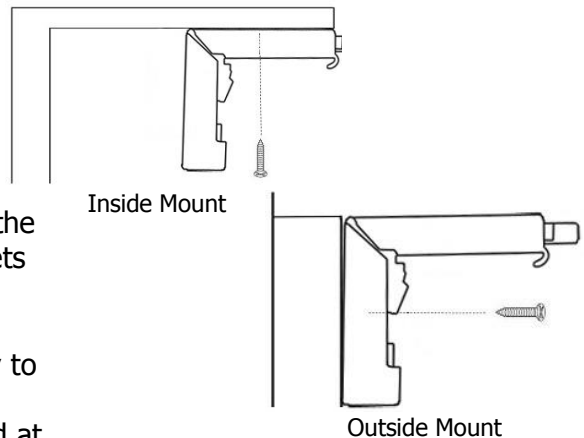
Installing Mounting Brackets

Inside Mount

The Installation Brackets (part A) are fixed directly to the mounting surface, spaced evenly. Make sure all brackets are in a straight line so the headrail will attach easily.

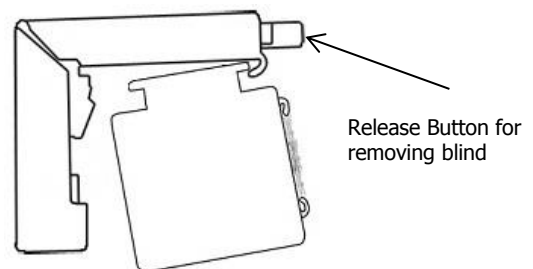
Outside Mount

The Installation Brackets (part A) are mounted directly to the architrave or wall, spaced evenly. Make sure all brackets are level. The brackets should not be installed at the very end of the headrail.



Attaching Blind to Bracket

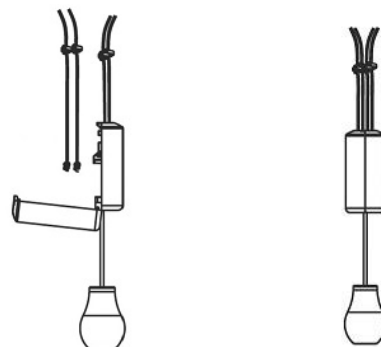
Position the front edge of the headrail into the front hooks of the installation bracket (part A) and gently push upwards and the track will 'snap' into position. To remove the blind, press the release button on the front of the installation bracket and disengage headrail from brackets.



Reassemble Breakaway Tassel

The breakaway tassel is a safety device, and is intended to pop open when certain pressures are applied. Please follow the steps below to reassemble the tassel.

- Ensure breakaway tassel is open
- Place pull cords into grooves on one side of tassel
- Snap tassel closed



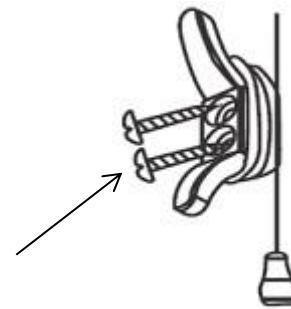
Installation Information

Roman Blind Safety Information

Child Safety Instructions *For Blinds With Cord Control*

Warning

- The cord cleat (part C) must be fitted to ensure child safety and to comply with regulations
- The cleat is to be positioned at least 1600mm above floor level, as a child is capable of unwinding a cord from a cleat
- Use two 19mm screws to attach each cleat to the wall. Do not use tape or glue to attach the cleat
- Wrap excess cord around the cleat every time the blind is raised/lowered, to prevent child strangulation
- The cord must not form a loop longer than 220mm and should be wound entirely around the cleat every time



2 x 19mm screws



WARNING – ALL WINDOW COVERINGS WITH CORD OR CHAIN

To avoid creating a possible strangulation hazard for children, the corded or chained internal window covering must be installed in such a way that a loose cord or chain cannot form a loop 220mm or longer at a height of less than 1600mm above floor level.

- A cord/chain guide may be installed lower than 1600mm above floor level if the cord/chain is sufficiently secured or tensioned to prevent a loop 220mm or longer being formed
- If a cord/chain guide is installed lower than 1600mm above floor level, it must be designed to prevent a child from being able to remove the cord/chain
- If a cleat is used to secure the cord, it must be at least 1600mm above floor level because a child is capable of unwinding a cord from a cleat